

**SPORTSCOACH<sup>®</sup>**

**THE SECOND  
GENERATION  
MOTOR HOME**

**TECHNICAL CONSTRUCTION STORY**

WHAT'S A SECOND GENERATION MOTOR HOME?

IT'S A MOTOR HOME BUILT FOR THE PERSON WHO LOVES TO TRAVEL AND WANTS EVERYTHING TO BE RIGHT WHEN HE'S IN HIS HOME ON THE ROAD. AND OFF THE ROAD TOO.



YOU SEE, FIRST GENERATION TYPE MOTOR HOMES CONCEIVED THE IDEA THAT PEOPLE COULD TRAVEL TO WONDERFUL PLACES AND NOT LEAVE THE COMFORT OF THEIR HOMES. THEY WERE FOR PIONEERS WHO BEGAN AGAIN TO DISCOVER LIFE. THESE MOTOR HOMES WERE REALLY BOX HOMES ON WHEELS.

TECHNOLOGY THEN CAUGHT UP WITH THE CONCEPT OF MOTOR HOMING. A NEW GENERATION OF TRAVELING AMERICANS ASKED FOR MORE THAN A HOME ON WHEELS. THEY ASKED FOR A MOTOR HOME THAT WAS A BETTER HOME, AND A BETTER VEHICLE TOO. SO SPORTSCOACH WAS BORN AND SO WAS THE SECOND GENERATION OF MOTOR HOMES.

BUT THAT WAS SOME TIME AGO. TODAY WE BUILD A MOTOR HOME THAT IS SO SOPHISTICATED WE WANT YOU TO SEE HOW WE BUILD IT.

YOU CAN STILL BUY A BOX OR YOU CAN STEP UP TO SPORTSCOACH. THIS BROCHURE IS DESIGNED TO SHOW YOU WHAT MAKES A SPORTSCOACH A GREAT MOTOR HOME AND WHAT ITS SPECIAL FEATURES ARE.



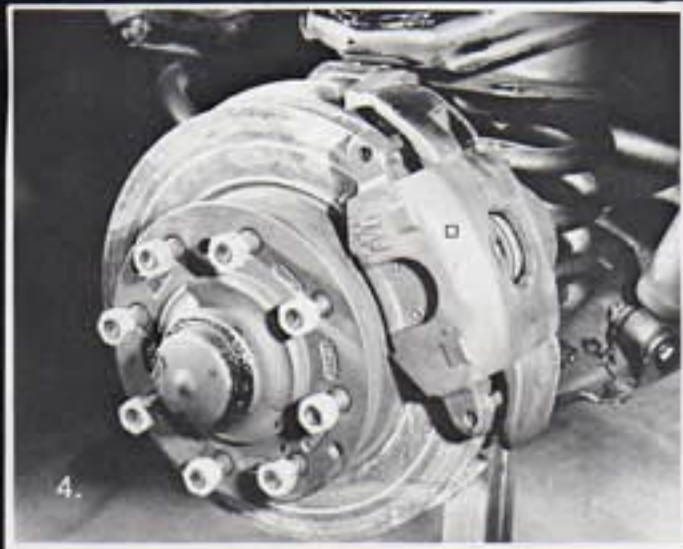
THE SPECIALLY DESIGNED MOTORHOME CHASSIS ARRIVES AT THE SPORTS-COACH ASSEMBLY FACILITY EQUIPPED WITH:



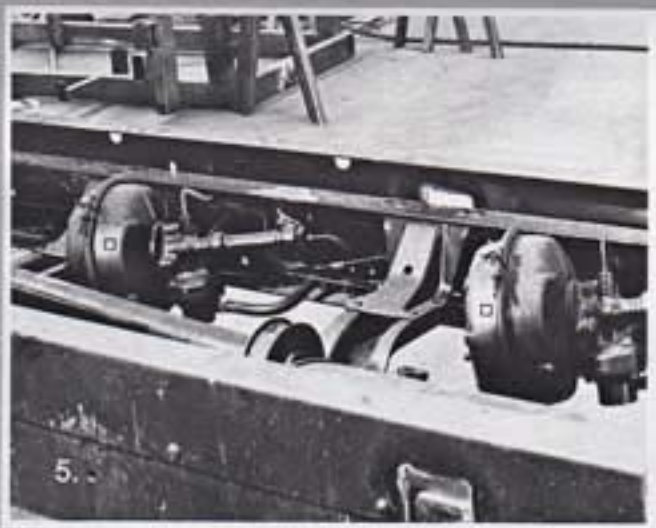
SPECIAL REAR LEAF SPRINGS □ TO INCREASE LOAD CAPACITY AND IMPROVE BALANCE,



FRONT INDEPENDENT SUPER SUSPENSION SANDWICH ■ TO MAKE THE RIDE SMOOTH,



FRONT DISC BRAKES □ FOR MAXIMUM BRAKING SAFETY.



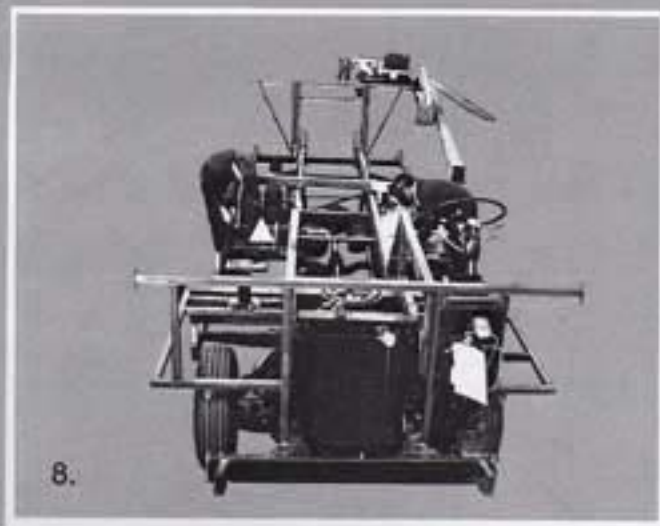
A DUAL BRAKING SYSTEM □ SO IF ONE SYSTEM SHOULD MALFUNCTION THE OTHER AUTOMATICALLY COMPENSATES.



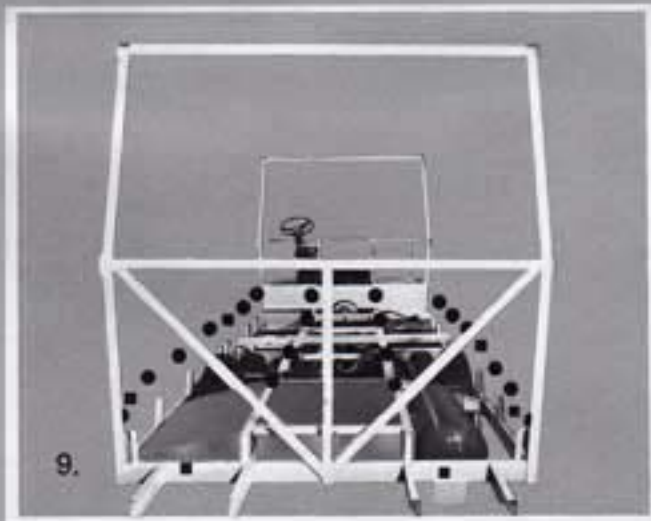
OUR WELDERS THEN CUT AND FORM FRAMING SECTIONS □ . . .



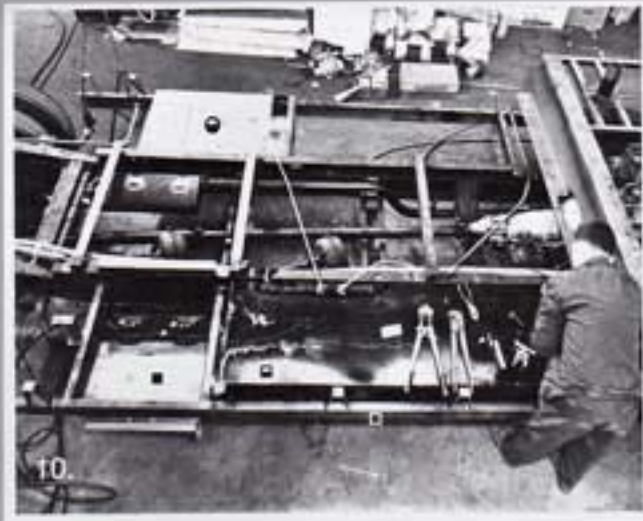
WHICH ARE PRECISION WELDED . . .



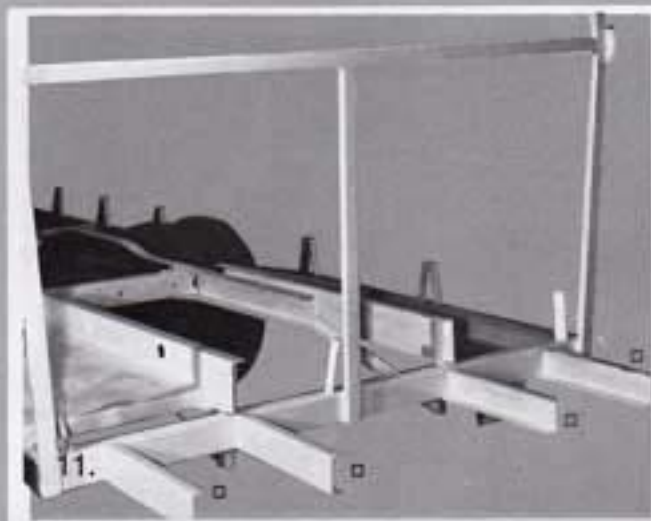
TO THE SPECIFICATIONS OF PRECISION TOOLED JIGS ▲ . THIS IS PART OF THE BUILT-IN QUALITY CONTROL SYSTEM. SPORTSCOACH BEGINS MAKING SURE ITS PERFECT FROM THE GROUND UP.



MASSIVE PERIMETER FRAMING PROTECTS THE TANKS ■ AND EQUIPMENT FROM IMPACT. NOTE THE STEEL FLOOR MOUNTS ● WELDED TO THE FRAME ALLOWING COMPLETE FLOOR STABILITY.



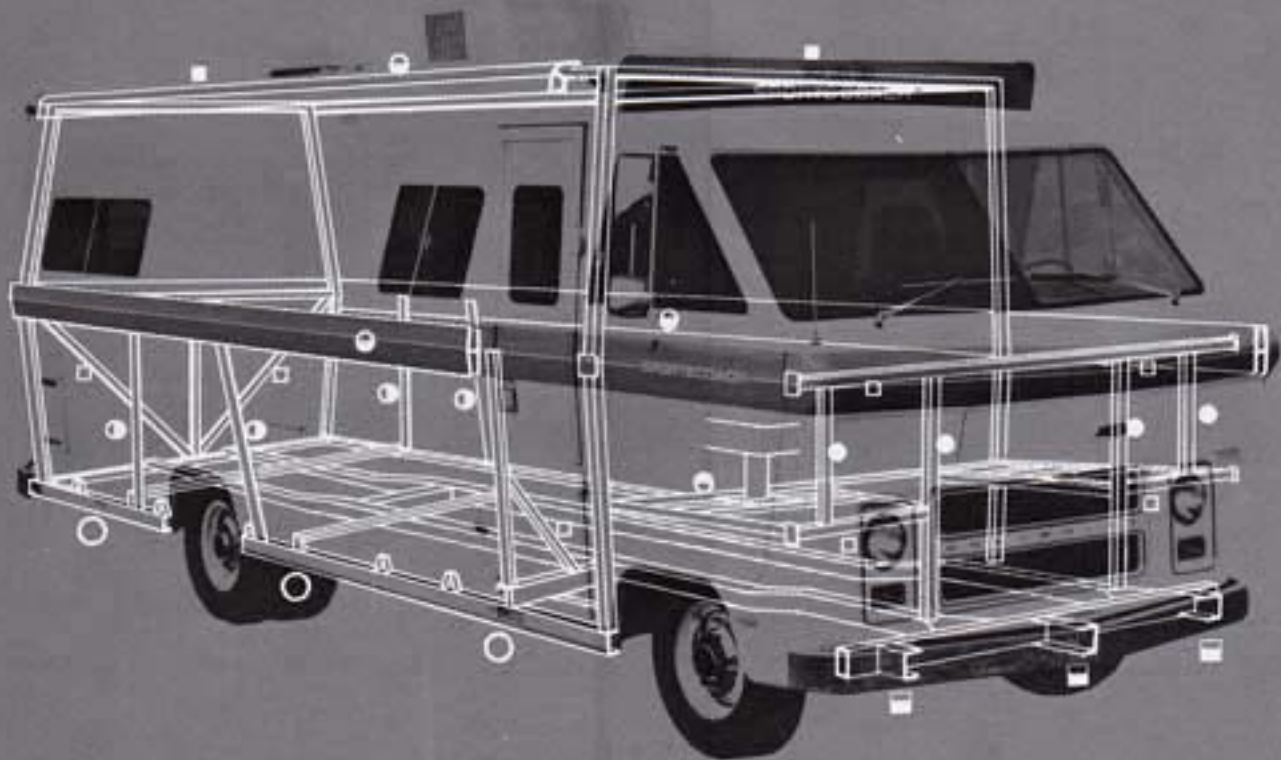
THE GASOLINE TANK ■ HAS PERIMETER FRAMING □ AS DOES THE DUST PROOF BATTERY COMPARTMENT ■ AND THE FRAME MOUNTED ONAN GENERATOR PLATFORM ●.



THE FRONT AND REAR BUMPERS HAVE SPECIAL SUPPORT STEEL □ WELDED TO THE ORIGINAL TRUCK CHASSIS SO THE SPORTSCOACH CAN BE TOWED BY THE FRONT OR REAR BUMPER WITHOUT DAMAGE TO THE VEHICLE.



THE SEAT PEDESTALS ■ ARE WELDED TO THE FRAME AS IS THE 11 INCH STEEL FRAME CROSS MEMBER ●. ALL SAFETY FEATURES ARE THEN INSPECTED TO INSURE COMPLETE SAFETY, AND QUALITY CONTROL.



13.

THIS CUTAWY SECTIONAL SHOWS THE LATERAL SUPPORT MEMBERS □, THE STEEL ROLLOVER STRUCTURES FRONT AND REAR ■, THE EXTRUDED ALUMINUM LONGITUDINAL BOND BEAM FRAMES ●, THE HIGH STRENGTH CONTINUOUS PERIMETER FRAME OF 2 X 4 STRUCTURAL STEEL ○, THE FRONT BUMPER SUPPORTS ▣, THE SEAT PEDESTAL WELDED TO THE FRAME ●, THE FRONT SUPPORT

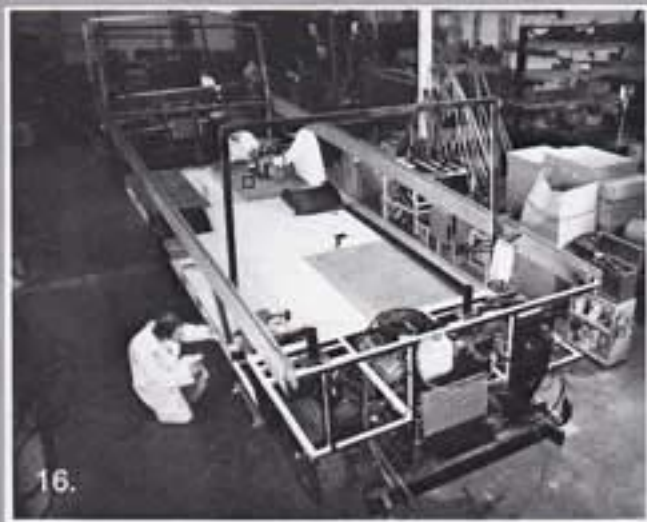
MEMBERS ●, AND SIDE COACH LATERAL SUPPORTS ●. A UNIQUE CONCEPT IN MOTOR HOME CONSTRUCTION, MODULE BEAM CONSTRUCTION IS FAR SUPERIOR TO THE BIRD CAGE THEORY WHICH HAS NO LATERALLY SUPPORTED STRUCTURAL INTEGRATION FOR PROTECTION. THE FIRST GENERATION TYPE MOTORHOMES OFTEN HAD NO FRAMING. BE SURE YOU ASK.



THE ENTIRE PERIMETER FRAME IS THEN INSPECTED FOR MECHANICAL ACCURACY. THIS IS PART OF THE QUALITY CONTROL SYSTEM THAT INSURES PERFECT END RESULTS.



LINES TO THE REAR HEATING SYSTEM ARE ENCASED IN VIBRATION FREE RUBBER □ AND INSPECTED FOR QUIETNESS. NOTE THAT THE FRAME HAS BEEN ELECTROSTATICALLY PAINTED SO THAT ALL THE FRAMING IS RUST PROTECTED.



THE FLOOR, A LAMINATED SANDWICH OF ALUMINUM SHEETING, POLYURETHANE FOAM, AND MARINE TREATED PLYWOOD, IS MOUNTED TO THE STEEL FRAME AND INSPECTED. THE ONAN GENERATOR IS THEN INSTALLED □.

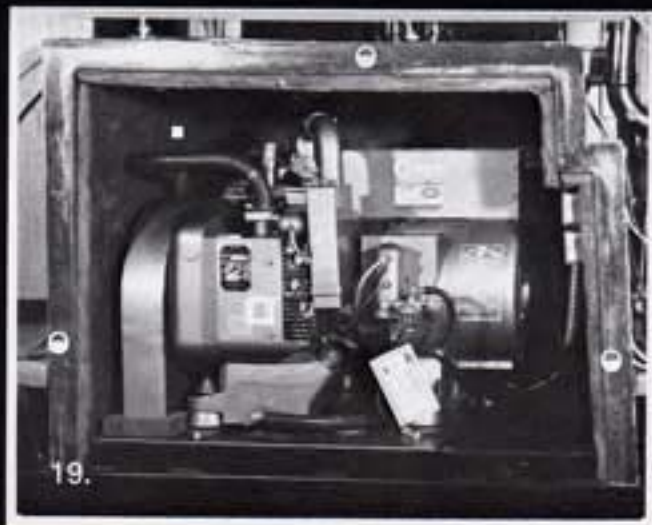


THE ONAN USED IS EQUIPPED WITH A SPECIAL EXHAUST MANIFOLD □ TO REDUCE BACK PRESSURE AND INCREASE THE LIFE OF THE UNIT. OUR SPECIALIST, DICK KIMBALL, DESIGNED IT IN CONJUNCTION WITH THE MANUFACTURER.





WE HAVE A SPECIAL PLASTICS DIVISION WHERE FIBERGLASS COMPONENTS SUCH AS ENGINE COVERS, DASH BOARDS, FRONT AND REAR COACH SECTIONS, THE SPORTSCAB, AND ONAN SOUND PROOFING CABINETS ARE CONSTRUCTED.



THIS PICTURE SHOWS THE ONAN GENERATOR □, THE SPECIAL EXHAUST MANIFOLD SYSTEM ■, AND THE FIBERGLASS SOUND PROOF ONAN CABINET ●.



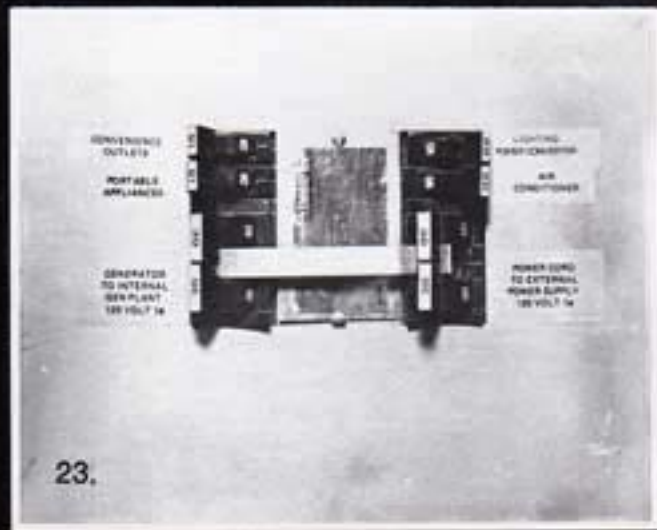
THE WOOD SHOP CUTS AND SIZES ALL WOOD PARTS FOR INSURED FIT AND LASTING QUALITY.



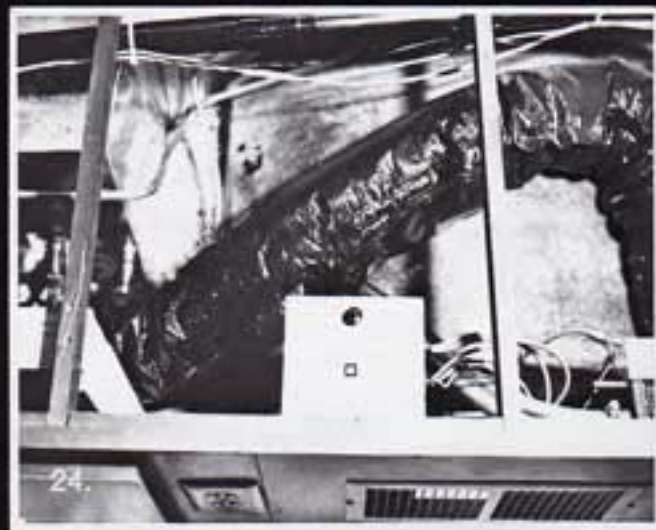
EXPERT CABINET MAKERS CONSTRUCT AND FIT EACH PIECE OF CABINETRY TO INSURE THAT THEY ARE ACCEPTED INTO THE VEHICLE WITH NO RUBBING OR SQUEAKING, FLOOR TO CEILING.



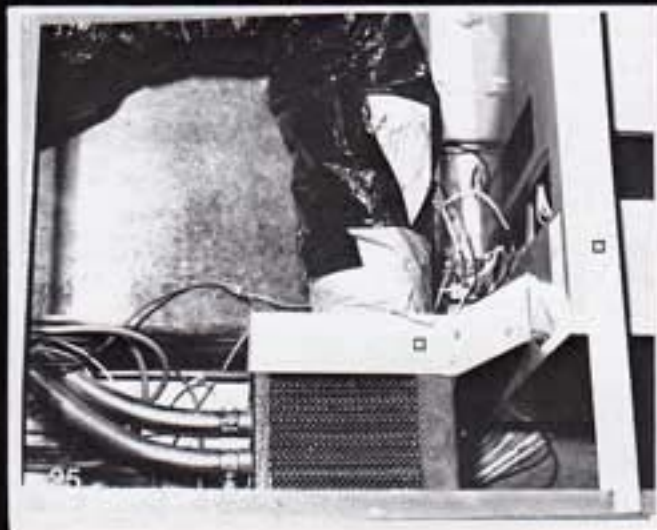
THE 6.2 GALLON FAST RECOVERY HEAT EXCHANGER HOT WATER HEATER □ IS LOCATED FOR EASY ACCESS IN THE KITCHEN AREA. NO MORE WAITING FOR THE HOT WATER.



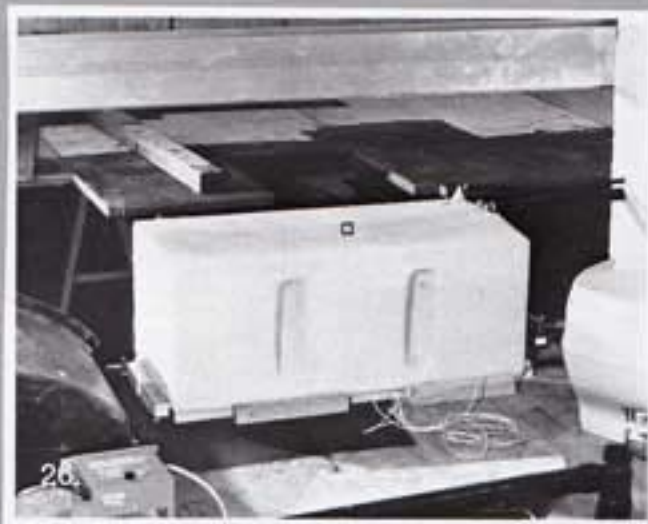
THE ELECTRICAL POWER SYSTEM HAS CIRCUIT BREAKER CONTROL TO ELIMINATE PROBLEMS WITH REPLACING FUSES.



THE SPORTSCOACH COMES EQUIPPED WITH A 35 AMP HEAVY DUTY CONVERTER-CHARGER □ WHICH AFFORDS A UNIFIED ELECTRICAL SYSTEM.



THE 22,000 B.T.U. FORCED AIR DUCTED FURNACE □ IS LOCATED IN THE BEDROOM. IT IS TRIPLE DUCTED AND THERMOSTATICALLY CONTROLLED.



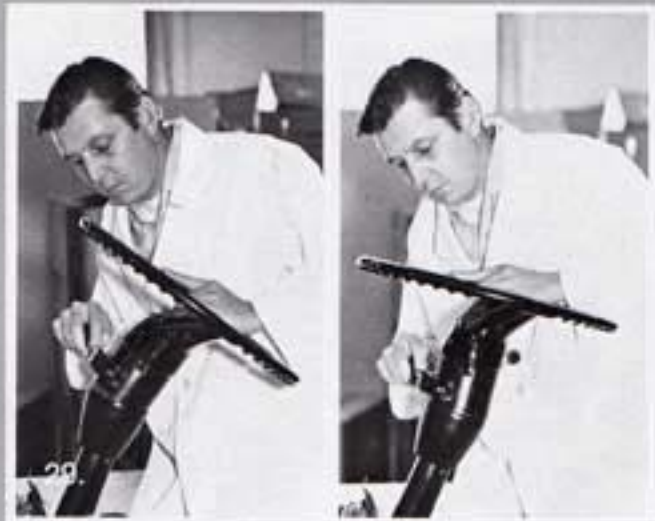
THE 57 GALLON WATER TANK □ IS LOCATED IN THE BATHROOM AREA AND HAS A TRANSISTORIZED GAUGE ON THE INSTRUMENT PANEL SO YOU NEED NEVER RUN OUT OF WATER.



AT THIS POINT THE CABINETY CONTAINING THE 75 CUBIC FT. REFRIGERATOR/FREEZER □, THE 4 BURNER STOVE ●, THE DUAL STAINLESS STEEL SINKS ■, AND THE EYE-LEVEL OVEN ● IS INSTALLED AND INSPECTED FOR FIT.



THE WATER SYSTEM HAS A SPECIAL ACTIVATED CHARCOAL FILTER □ WHICH IS ACCESSIBLE FROM THE OUTSIDE OF THE COACH FOR EASY REPLACEMENT. NOTE THE POLYURETHANE ALUMINUM REAR INNER-WALL SANDWICH ●.

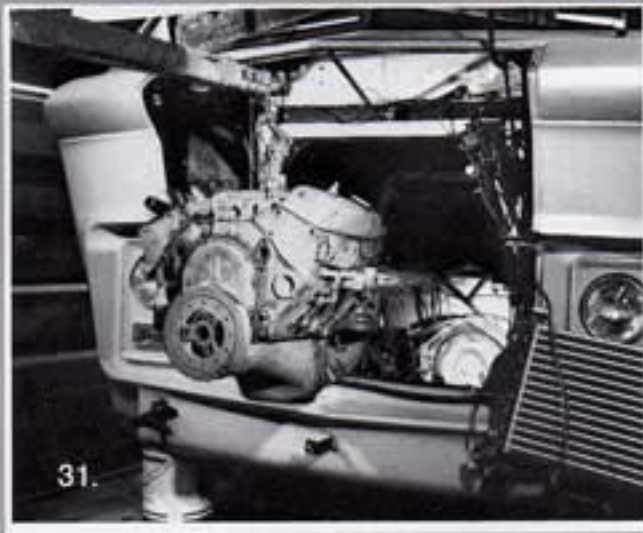


THE SPORTSCOACH HAS A FIVE POSITION TILT STEERING WHEEL THAT IS FACTORY INSTALLED AND S.C.A. INSPECTED.



30.

HAVING MET ALL THE TESTS TO THIS POINT, THE ENGINE, ALREADY PRE-TESTED AT THE FACTORY, IS NOW RE-TESTED BY ANOTHER QUALITY CONTROL ENGINEER.



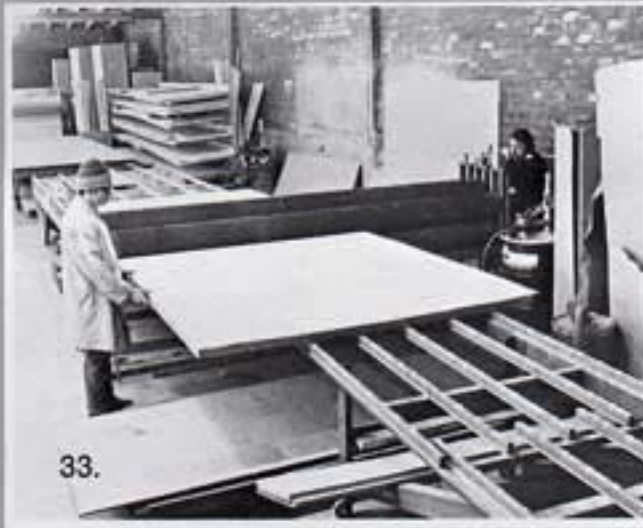
31.

SPORTSCOACH IS DESIGNED SO THAT YOU NEEDN'T TEAR UP THE INTERIOR TO REMOVE THE ENGINE. IT IS ACCESSIBLE FROM THE OUTSIDE IF IT EVER NEEDS TO BE PULLED.



32.

ALL OF THESE TESTS ARE CONDUCTED TO BE CERTAIN THAT THERE WILL BE NO ROAD DELAYS. THE SPORTSCOACH, AND COUNTRY LIKE THIS WERE MADE FOR EACH OTHER.



33.

THE ASTRO TEMPTM PANELING IS A SANDWICH TYPE STRESSED SKIN ALUMINUM WITH CHEMICALLY PRESSURE BONDED EXPANDED POLYURETHANE FOAM. THE THICKEST AND BEST INSULATED WALL YOU CAN BUY.



HIGH STRENGTH EXTRUDED ALUMINUM LONGITUDINAL BOND BEAM FRAMES ARE DELIVERED IN QUANTITY FOR USE IN WALL CONSTRUCTION. SPORTSCOACH HAS MORE PRE-TOOLED COMPONENTS THAN ANYONE IN THE R.V. INDUSTRY.



THE ASTRO TEMP™ PANELING IS CONSTRUCTED ON SPECIAL JIGS.



IT IS THEN HOISTED INTO PLACE ON THE COACH. THE 8 INCH LONGITUDINAL BOND BEAM □ AND STRETCHED ALUMINUM WALL SKIN PROVIDE OPTIMUM IMPACT PROTECTION.

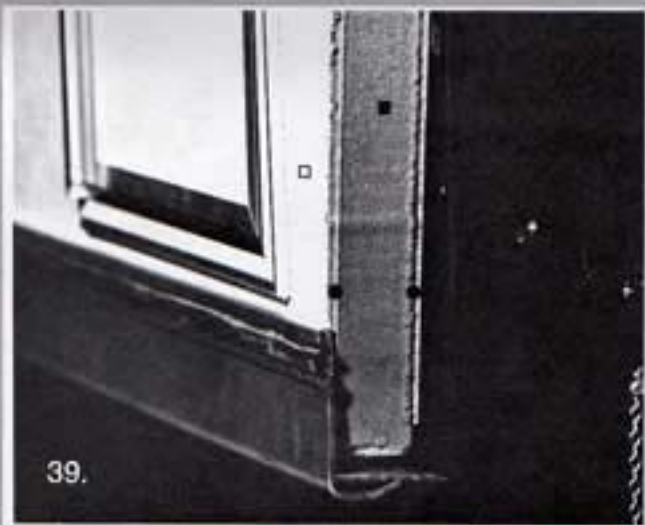


THE WALLS ARE BOLTED TO THE FRAME. SO ACCURATE IS THE TOOLING THAT THE BOLT HOLES ARE PRE-DRILLED WHEN THE WALLS ARE CONSTRUCTED, AND THEY ALWAYS FIT.



38.

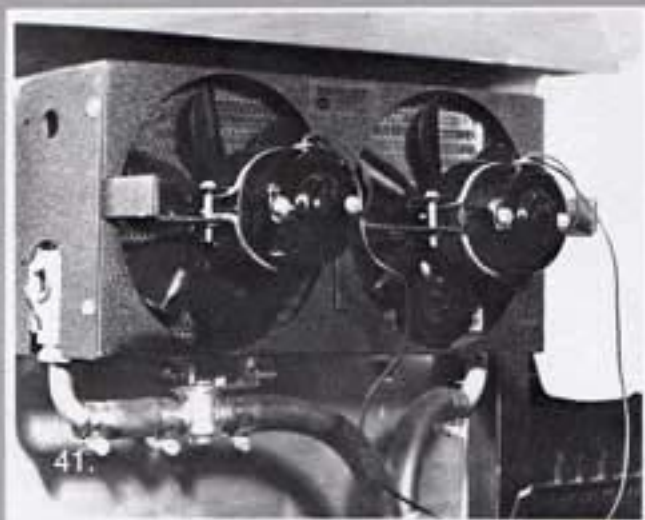
THE WALL IS MADE UP OF THE ASTRO TEMPTM PANEL ● AND EXTRUDED ALUMINUM BOND BEAMS AT THE TOP, MIDDLE, AND BOTTOM ▲ . NOTE THE REAR ROLLOVER STRUCTURE ○ , THE REAR LATERAL PASSENGER PROTECTION STRUCTURE ◉ , THE REAR LATERAL SUPPORTS ● , AND THE BUMPER SUPPORTS ■ .



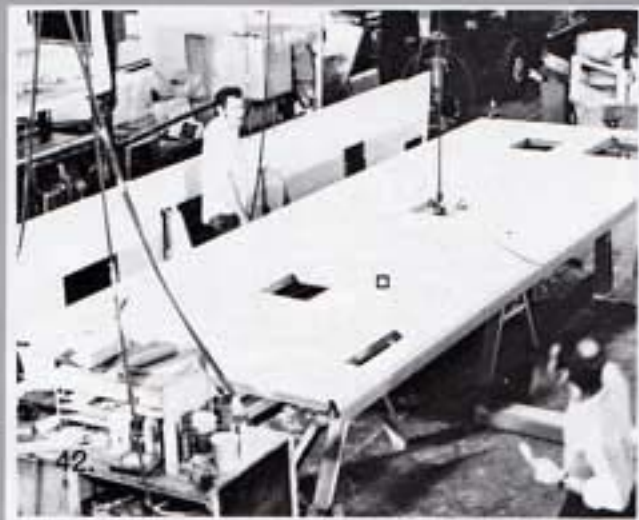
39. THIS IS A CROSS SECTION SHOWING THE ALUMINUM OUTER WALL □, THE PLYWOOD INNER AND OUTER WALLS ●, AND THE POLYURETHANE INSULATION ■.



40. ONCE THE WALLS ARE IN PLACE THEY ARE INSPECTED AGAIN TO MAKE CERTAIN ALL SEAMS ARE EXACT IN THEIR FIT.



41. THE SPORTSCOACH IS EQUIPPED WITH THREE HEATING SYSTEMS: A) CAB HEATER DEFROSTER, B) A REAR AUXILIARY HEATER THAT USES ENGINE WATER, C) A TRIPLE DUCTED THERMOSTATIC PROPANE HEATER.



42. THE ROOF IS AN ASTRO TEMPT™ SANDWICH □, ALSO OF ALUMINUM AND POLYURETHANE. IT IS MADE IN OUR PLASTICS DIVISION AND DELIVERED TO THE ASSEMBLY PLANT.



IT IS THEN HOISTED . . .



OVER THE WALL AND FRAMING STRUCTURE . . .



LOWERED INTO PLACE . . .



AND INSPECTED FOR FIT AND QUALITY CONTROL.





NOTE THAT THE ROOFS ARE STRUCTURAL SHEET ALUMINUM DESIGNED TO BE USED AS A SUN DECK. EXTRUDED ALUMINUM CROSS-BRACING REINFORCE THE ROOF.



THE REAR FIBERGLASS CAP □ IS FITTED TO THE ALUMINUM REAR INNER WALL.



THE REINFORCED FRONT CAP □ IS ATTACHED TO THE COACH AND INSPECTED.



THE DUAL TINTED SAFETY GLASS WINDSHIELD IS NOW INSTALLED. THESE FLAT WINDSHIELD HALVES CAN BE EASILY REPLACED. ANOTHER SPORTSCOACH SERVICE FEATURE.



THE DOORS FOR A SPORTSCOACH ARE MADE AT OUR PLANT OUT OF ALUMINUM. THEY ARE MACHINED FOR HEAVY-DUTY USE AND PROVIDE COMPLETE WEATHER-PROOFING.



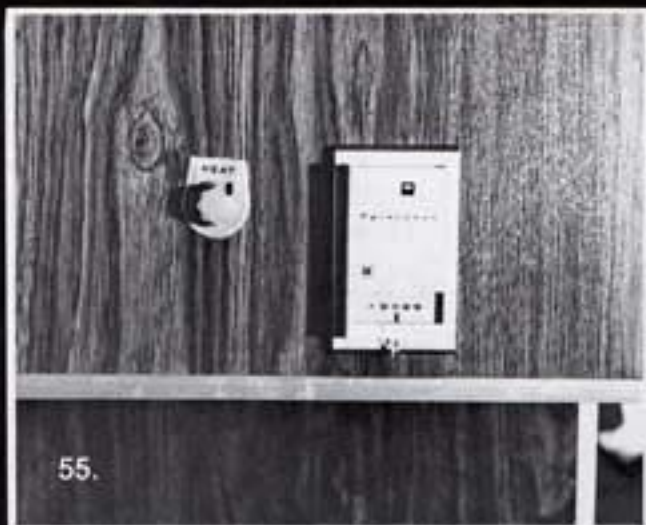
IN THE FINAL DETAIL AREA, TRIM PACKAGES ARE ADDED AND THE INTERIOR FEATURES ARE COMPLETED.



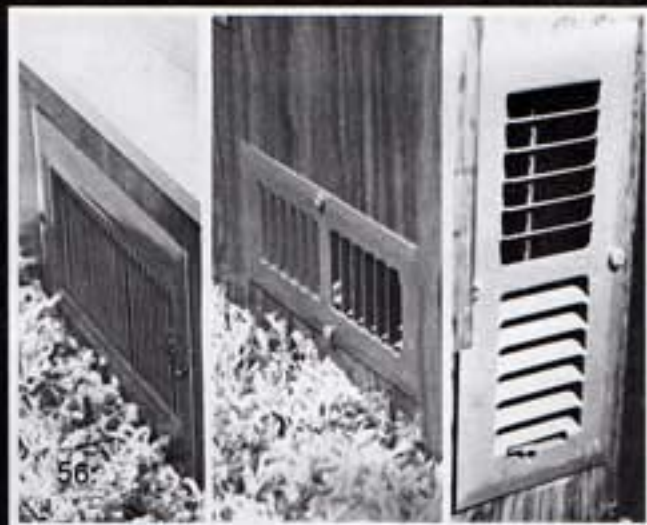
THE DOOR HINGES ARE SO WELL CONSTRUCTED THAT THEY CAN TAKE TREMENDOUS STRAIN AND REMAIN IN ALIGNMENT.



IN THE FINAL INSPECTION AREA ALL SAFETY REQUIREMENTS MUST BE MET.



THE SPORTSCOACH HAS DUAL HEATING CONTROLS IN THE BEDROOM FOR EASY USE. ONE FOR THE AUTOMOTIVE ENGINE REAR HEATER , AND ONE FOR THE PROPANE FURNACE .



THIS CUTAWAY SHOWS THE TRIPLE HEATER DUCTING DESIGNED FOR UNIFORM CLIMATE CONTROL THROUGHOUT THE COACH.



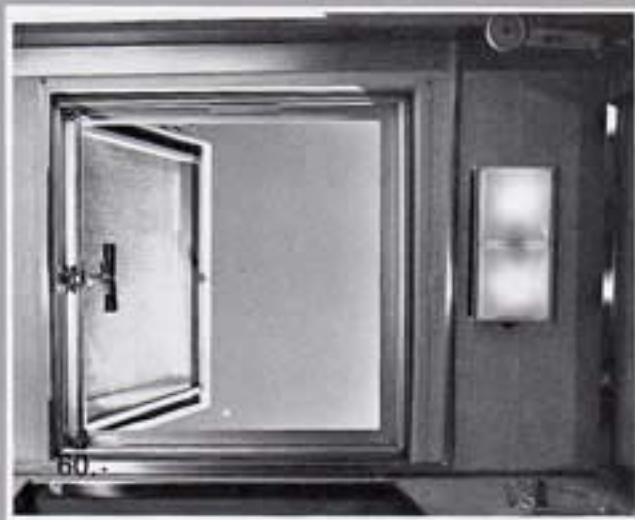
THE DRESSING ROOM, ADJACENT TO THE BATHROOM ALLOWS LUXURIOUS COMFORT. NOTE THE FULL SIZE CLOSET AREA.



THE BATHROOM FEATURES THE MOST MODERN AND SANITARY DELUXE WATER SAVING TOILET.



A SHOWER/TUB MODULE WITH BUILT IN COMFORT SEAT, EXTRA LARGE WASH BASIN, AND BUILT IN SOAP DISH.



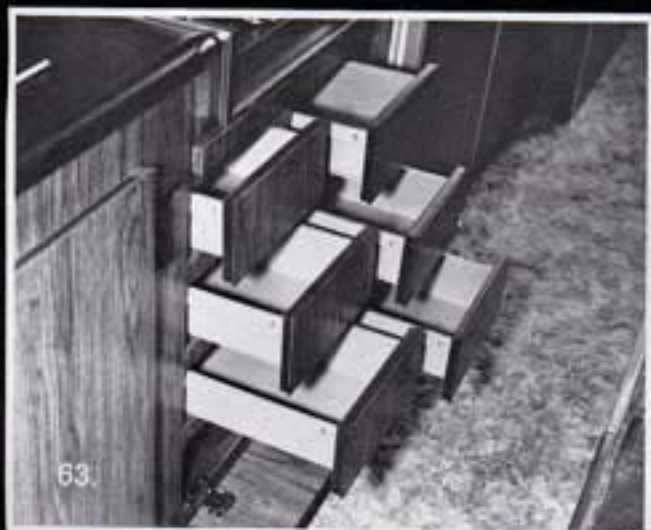
IN THE ROOF OF THE SHOWER MODULE THERE'S A POP OPEN ESCAPE HATCH FOR EMERGENCY EXIT OR, ENTRANCE TO THE SUN DECK FROM THE INSIDE.



THE SPORTSCOACH HAS TREMENDOUS COUNTER AREA. NOTE THE FORMICA GALLEY TOP ■, THE MOEN WATER SAVER FAUCETS (STANDARD THROUGH-OUT), SAFETY POWER EXHAUST VENT ▲, COOKING LIGHT AND EYE LEVEL OVEN ●.



THE KITCHEN FEATURES AN EXTRA LARGE CUTTING BOARD...



REMOVABLE SIDE GALLEY STORAGE DRAWERS (PLASTIC) . . .



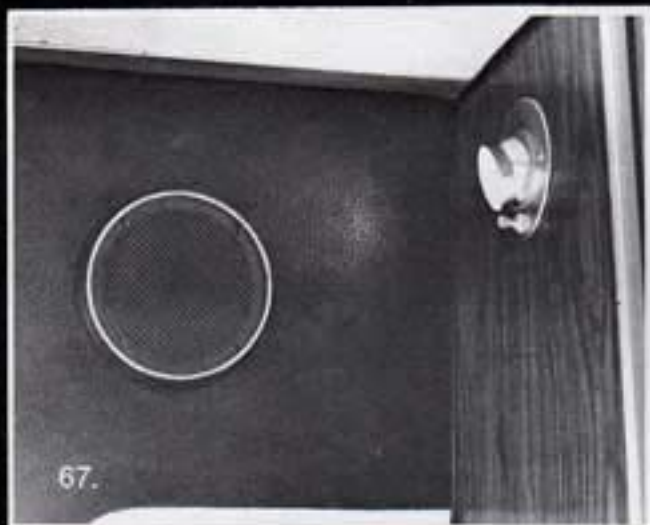
A COMPLETE WEATHER AND CENTRAL CONTROL PANEL ALLOWS YOU TO CONTROL THE AUXILIARY POWER OF THE COACH AS WELL AS CHECK ALL VITAL CAPACITIES AND INFORMATION.



THE SLIDE-IN DINETTE TABLE SEATS SIX AND HAS AN "EASY CLEAN" FORMICA TOP. A REAR STORAGE RACK TRANSFORMS THE KITCHEN AREA INTO THE LIVING ROOM.



THIS KITCHEN CABINET SHELF MAKES A CONVENIENT STORAGE SPACE FOR LITTLE THINGS.



ABOVE THE PASSENGER AND DRIVER SEATS THERE IS A MAP LIGHT AND A TOP QUALITY STEREO SPEAKER.



THE UNIQUE COCKPIT DESIGN FEATURES INSULATED MOTOR BOX □, FRONT AIR CONDITIONING UNIT ■, LEAR JET AM/FM STEREO MULTIPLEX DECK ■, AND DEEP PILE CARPET ▲.



THE INSTRUMENTATION INCLUDES DUAL WIPER SWITCHES ■, FRONT AND REAR SPEAKER SWITCH □, AND DUAL HORN CONTROLS ▲.



THE SPORTSCAB HEATER CONTROLS ARE CONVENIENTLY LOCATED NEXT TO THE STEERING COLUMN. THEY ALLOW THE DRIVER TO CONTROL THE TEMPERATURE OF THE CAB FOR DRIVING EASE.



EVERY SPORTSCOACH COMES WITH A COMPLETE OWNERS MANUAL AND FULL SERVICE MANUAL COVERING EVERY PIECE OF EQUIPMENT ON THE COACH.



AFTER ALL OF THE IN-PLANT TESTING IS COMPLETED, THE SPORTSCOACH IS TESTED ON CITY STREETS AND . . . IN ITS NATURAL HABITAT.

NOW THAT YOU KNOW HOW WE BUILD A SPORTSCOACH, COMPARE OUR MOTOR HOME WITH ALL THE OTHERS. YOU WILL SEE THE DIFFERENCE THE SECOND GENERATION HAS MADE. DON'T MISS IT!

MOTORHOMING IS GREAT IF YOU OWN THE RIGHT MOTOR HOME. SPORTSCOACH IS THE RIGHT ONE, THE SECOND GENERATION MOTOR HOME.

**SPORTSCOACH** **SCA**  
CORPORATION OF AMERICA

9601 Canoga Ave., Chatsworth, California 91311 • (213) 882-8522

**SCA**